

**KL07****Kemsol****KL7 RINSE****PRODUCT INFORMATION**

## Rinse Additive

Aid to improve the speed and quality of the finishing of automatic machine washed dishes, cutlery and glassware. Leaves cutlery, glasses and dishware dry and spotlessly streak-free. Septic tank safe, when used as directed.

### DIRECTIONS

For use with Kemsol KemLock system only for commercial automatic warewashing machines. Connect Blue Kemlock cap firmly. Dose automatically at 1 ml per litre in potable rinse water.

## KemLock Safer Chemical Dispensing System

The KemLock (closed loop) system is a smarter and safer approach to chemical dispensing. Preventing leaks and spills, reduces chemical waste and boasts accurate dosing.

A consistent, reliable chemical delivery system, eliminating spills, drips and the chance of product contact by staff.

**Safer. Smarter. Simpler.**

## CHEMICAL SOLUTIONS SUSTAINABILITY POLICY

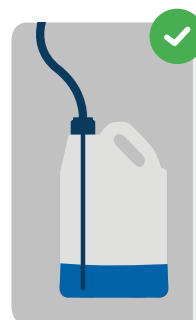
We are committed to continual improvement in our environmental performance, and have established a number of goals and initiatives helping achieve this objective. Where possible we always use biodegradable raw materials and all our finished product packaging is reusable or recyclable.

This is only a start, we continually strive to better our environmental performance.

Visit [chemicalsolutions.co.nz](http://chemicalsolutions.co.nz) for more information.

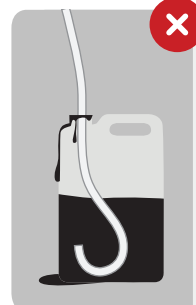


Scan the QR code to view the product SDS

**COMMERCIAL STRENGTH****STREAK-FREE DRYING****SURFACE & SEPTIC TANK SAFE****QUICK-DRYING****SAFETY & RESULTS**

### With KemLock

- Neck insert safely locks in chemical
- Direct cap-to-dosing tube connection reduces tube curling
- Secure at every point: reduces risk of leakage and user exposure
- Cap ventilates, regulating pressure build up



### Without KemLock

- Unsecured dosing tubes cause leaks and can start curling
- Poor airflow could stop product dispensal completely
- Higher chance of spills and end user skin contact
- Leaking chemicals can create environmental contamination

**COMMERCIAL KITCHENS** Automatic dishwashers and glasswashers

### PROPERTIES

<b>APPEARANCE</b>	Clear Blue Liquid
<b>FRAGRANCE</b>	No Fragrance
<b>SPECIFIC GRAVITY</b>	1.02
<b>pH</b>	2.7



### REORDER

5 Litres **FK-KL7R05**

**Chemical Solutions**  
LIMITED

0800 Kemsol (536 765)  
[www.kemsol.co.nz](http://www.kemsol.co.nz)  
1 Freight Place,  
Airport Oaks, Auckland